

**KENNETH KING
MARINE ARTIST**

CATALOGUE OF WORKS



AUGUST 2017

INDEX

<i>Section</i>	<i>Page</i>
1. Irish Shipping Limited Collection of paintings of the Irish Shipping fleet	4
2. Merchant Shipping Collection of paintings of merchant shipping Collection of paintings of naval, customs, fishing vessels and lifeboats	7 8
3. Commissioners of Irish Lights Collection of paintings of Irish Light Tenders (ILVs), lighthouses and lightvessels	10
4. Coastal Seascapes	12
5. About the Artist	15

Cover Painting

S.S. Laurentic (AMC 1939 – 1940)
 Torpedoed off Bloody Foreland, Co. Donegal 03.11.1940
 Oil on hardboard 16" x 12"
 Catalogue no: 02.17

**Prices for paintings will be supplied on request.
 Please phone 074 9730126 or email info@king-studio.com**

All paintings in this catalogue copyright © Kenneth King 1999 – 2017.

IRISH SHIPPING LTD 1941 - 1984

IRISH SHIPPING LTD



S.S. Irish Willow 1941 – 1946
Oil on hardboard 16" x 12"
Catalogue no: 25.09



S.S. Irish Poplar 1941 – 1949
Oil on hardboard 16" x 12"
Catalogue no: 18.09



S.S. Irish Fir 1941 – 1949
Oil on hardboard 16" x 12"
Catalogue no: 05.09



S.S. Irish Spruce 1942 – 1949
Oil on hardboard 16" x 12"
Catalogue no: 36.08



S.S. Irish Cedar 1943 – 1945
Oil on hardboard 16" x 12"
Catalogue no: 32.08



M.V. Irish Maple 1957 – 1968
Oil on hardboard 24" x 16"
Catalogue no: 29.03

IRISH SHIPPING LTD



S.S. Irish Hawthorn 1958 – 1965
Oil on hardboard 22" x 16"
Catalogue no: 05.06



M.V. Irish Elm (3) 1968 – 1979
Oil on hardboard 16" x 12"
Catalogue no: 26.09



M.V. Irish Spruce (3) 1982 – 1984
Oil on hardboard 16" x 12"
Catalogue no: 17.09

MERCHANT & NAVAL SHIPPING

MERCHANT SHIPPING



Ship Hibernia of Belfast
Oil on hardboard 22" x 16"
Catalogue no: 39.08



R.M.S. Titanic disembarking pilot off
the Daunt Lightvessel, 11th April 1912
Oil on hardboard 28" x 18"
Catalogue no: 21.11



S.S. Laurentic (AMC 1939 – 1940)
Torpedoed off Bloody Foreland, Donegal 03.11.1940
Oil on hardboard 16" x 12"
Catalogue no: 02.17



T.S.S. Transylvania (AMC 1939 – 1940)
Torpedoed off Inishtrahull, Donegal, 10.08.1940
Oil on hardboard 16" x 12"
Catalogue no: 03.17



M.Vs Isle of Inishmore and Arklow Castle
Oil on hardboard 30" x 22"
Catalogue no: 24.99

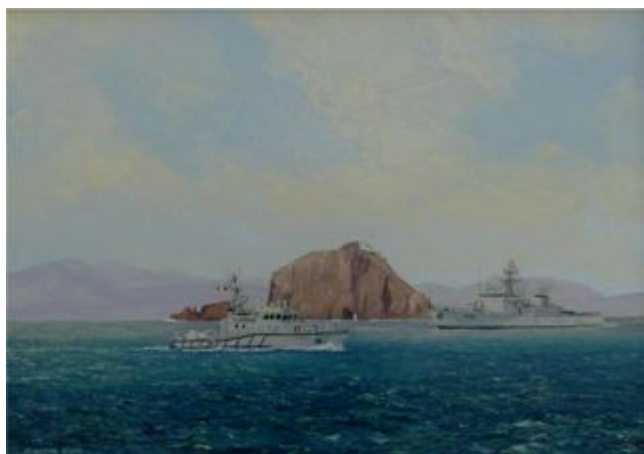
NAVAL, CUSTOMS, FISHING VESSELS & LIFEBOATS



L.E. Cliona, Irish Navy 1947 – 1970
Oil on hardboard 11" x 11"
Catalogue no: 22.07



L.E. Samuel Beckett with L.E. Aoife and L.E. Orla
Oil on hardboard 30" x 22"
Catalogue no: 05.14



Customs' Cutter Surbheir and L.E. Orla
Oil on hardboard 22" x 16"
Catalogue no: 08.08



HMS Ark Royal with HMS Cavalier and
RFA Lyness in company, 1970
Oil on hardboard 28" x 18"
Catalogue no: 01.13



R.N.L.B. Myrtle Maud – Arranmore Lifeboat
Oil on hardboard 22" x 16"
Catalogue no: 17.08

COMMISSIONERS OF IRISH LIGHTS

COMMISSIONERS OF IRISH LIGHTS



I.L.V. Isolda 1928 – 1940
Oil on hardboard 22" x 16"
Catalogue no: 14.10



I.L.V. Isolda 1953 – 1976
Oil on hardboard 22" x 16"
Catalogue no: 20.10



Disused lighthouse on West Maiden, Co. Antrim
Oil on hardboard 11" x 11"
Catalogue no: 09.15



Fanad Head Lighthouse, Co. Donegal
Oil on hardboard 11" x 11"
Catalogue no: 11.16



Cormorant on Coningbeg Station, c.1979
Oil on hardboard 28" x 18"
Catalogue no: 05.07

COASTAL SEASCAPES

COASTAL SEASCAPES



Glencolmcille Seascape, Co. Donegal
Oil on hardboard 28" x 18"
Catalogue no: 02.11



Malinmore Head from Garveross
Glencolmcille, Co. Donegal
Oil on hardboard 16" x 12"
Catalogue no: 05.16



Sea Sculpture, Port to Tormore, Co. Donegal
Oil on hardboard 30" x 26"
Catalogue no: 09.13



"Imionn na daoine ach fanann na cnoic"
Port, Co. Donegal
Oil on hardboard 30" x 26"
Catalogue no: 07.13



The Claddagh Mor
Glenlough, Glencolmcille, Co. Donegal
Oil on hardboard 28" x 18"
Catalogue no: 19.11



Remains of L.O.P. 79, Fanad Head, Co. Donegal
Coast Watching Service 1939 – 1945
Oil on hardboard 16" x 12"
Catalogue no: 03.13

COASTAL SEASCAPES



View from Sliabh a'Liag, Co. Donegal
Oil on hardboard 28" x 18"
Catalogue no: 11.08



Sliabh a'Liag, Co. Donegal
Oil on hardboard 28" x 18"
Catalogue no: 27.10



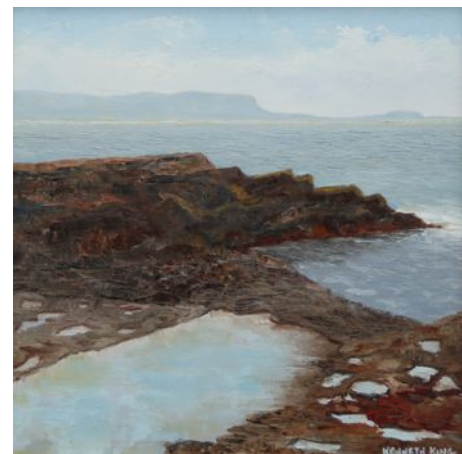
Remains of old coastguard station,
Teelin, Co. Donegal, c.1980s
Oil on hardboard 11" x 11"
Catalogue no: 09.17



Old coastguard lookout remains,
Teelin, Co. Donegal
Oil on hardboard 11" x 11"
Catalogue no: 08.17



View from St. John's Point, Co. Donegal
Oil on hardboard 22" x 16"
Catalogue no: 14.09



Ben Bulbin from St. John's Point, Co. Donegal
Oil on hardboard 11" x 11"
Catalogue no: 05.17

COASTAL SEASCAPES



Along the shore near Rosbeg, Co. Donegal
Oil on hardboard 16" x 12"
Catalogue no: 09.16



View from Downpatrick Head, Co. Mayo
Oil on hardboard 22" x 16"
Catalogue no: 06.17

ABOUT THE ARTIST



Born in Dublin, Kenneth King was commissioned into the Royal Navy as a Chaplain and served in the Arctic, Atlantic, Mediterranean and Far East waters. He began painting full-time in 1976, specialising in the naval and merchant shipping of Ireland, together with the country's coastline and lighthouses.

His work has been commissioned by State and private sector shipping interests, by the R.N.L.I., An Post, B.I.M. and the Office of Public Works. His works are also to be found in the collections of the Irish Navy, the Marine Institute, Shannon Estuary Ports, Killybegs' Fishermen's Organisation and the Maritime Institute of Ireland as well as in numerous private collections both at home and abroad.

Having exhibited annually at the Wexford Festival Opera for many years and at the Art Fair each November in the RDS since 2001, he now confines himself to exhibiting his work throughout the year at his studio-gallery.

Married with a family, Kenneth King lives and works in Glencolmcille, Co. Donegal, not far from the premier fishing port of Killybegs. From an artistic background, his father was the late Richard J. King, stained-glass artist and designer. His late brothers Richard Enda and David were also professional artists. He is a member of the Maritime Institute of Ireland and Visual Artists Ireland. He also directed the Oideas Gael School of Marine Painting in Glencolmcille for many years.

Recent theme exhibitions

- 2014 'Vitality of the Sea' – exhibition of marine oils, Sirius Arts Centre, Cobh, Co. Cork
- 2013 'Kenneth King: Saol agus Saothar' - An Gailearaí, Na Doirí Beaga, Co Dhún na nGall
- marking the launch of the book *Kenneth King: Life and Work* by Marianne O'Kane Boal.
- 2012 'Bound for Blue Water' – exhibition of marine oils, Rosses Point, Co. Sligo.
- 2009 Irish Shipping Commemorative Exhibition - National Maritime College of Ireland, Cork.
- 2005 'Of Ships and Lights' – Sirius Arts Centre, Cobh, Co. Cork.